

SOUTH OXHEY

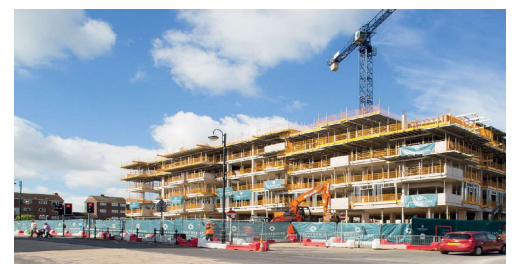
BRIDLINGTON RD, SOUTH OXHEY, HERTFORDSHIRE
WD19 7AF

CLIENT:
Countryside Partnerships West

CONTRACT VALUE:
£5,000,000



South Oxhey Central is a regeneration project that will provide over 500 new homes. This phase of the works, 2A and 2B, consist of 12 traditional town houses 162 apartments and retail space. Work commenced August 2018.



SCOPE OF WORKS

- > Pile caps ground beams
- > Substructure blockwork and floors
- > Installation of storm and foul drainage systems
- > Construction of reinforced concrete frame up to 6 stories
- > Externals works

