

Woodberry Down

Project Introduction

Woodberry Down is a major regeneration scheme at the cutting edge of urban regeneration in London, and leads the Future of London Organisation. It is situated in the northernmost part of the London Borough of Hackney close to Finsbury Park.

From a construction start in 2009, the masterplan will deliver up to 5,000 new homes, retails and a full range of community facilities.

The first phase of the masterplan - 'The Old School Site' - is a mixed use development of 498 units to over 34,000m². Bordering the West Reservoir the development has outstanding waterside views. It contains 7 individual blocks, an underground basement, external roads and landscaping. The tallest structure, Block A, towers to 27 storeys in height, and is an iconic feature in the area.

Scope of Works

- Over 22,000m³ bulk dig within contiguous piled wall followed by basement construction capped by podium transfer slabs to complex falls.
- Piling attendances followed by formation of pile caps, ground beams and slab bad.
- Raft slab over piling to Block A, some 27 storeys in height, followed by jumpform falsework to central core surrounded by perimeter protection screen. HV panel system used to achieve slab formations in a 5 day cycle.
- Traditional reinforced concrete structures for Blocks B to G ranging from 5 to 9 storeys in height.
- Employing the use of 4 tower cranes, the largest being the tallest freestanding luffing crane in Europe.
- Re-profiling of external areas for roads, soft and hard landscaping, including swales, attenuation and drainage infrastructure.

Site Address

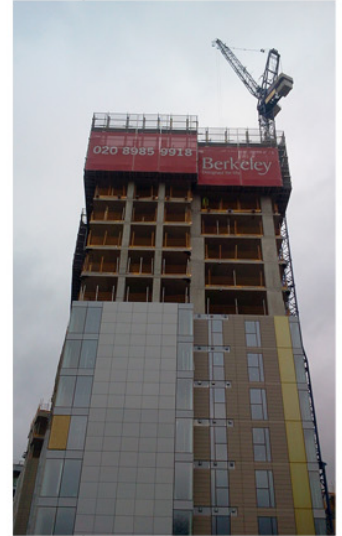
Hackney, London, N4 2SB

Client Details

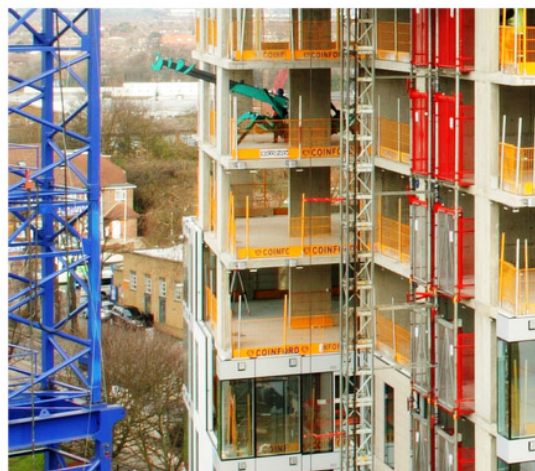
Berkeley Homes Ltd

Contract Value

£14million



Leaders in Construction
and Development



Leaders in
Construction
& Development